

The logo for 'twenty' features a stylized icon of three horizontal lines of varying lengths to the left of the word 'twenty' in a lowercase, sans-serif font. The background of the entire image is a dark green with white line-art outlines of various industrial components, including a laser safety enclosure, a multi-pin connector, and a circular device with a grid pattern. A hand holding a smartphone is visible on the left side, with green bokeh light effects scattered throughout the scene.

twenty

PRODUCTS THAT CONNECT THE WORLD

7twenty.tech



7Twenty is a world class company that is customer and solution driven. We use innovative and unique skill sets to stand out from our competitors.

Expert Connectivity Products:

Our products support the installation and connectivity of fiber optic networks, focusing on functionality, cost-saving and rapid deployment.

Complete, Custom Solutions:

A dedicated team of industrial designers, toolmakers and a state-of-the-art injection moulding facility enables us to ideate, design and manufacture your connectivity needs. The results are practical, beautiful solutions that reduce the total cost of ownership of network builds.

Next generation, fit-for-purpose telecom solutions

OUR VISION IS VAST

A globally recognised organisation.
known for building
the future.

A trusted, shared-value
partner to network
operators and installers
around the world.

Flexible, functional
first-class products,
impeccably executed
through our design,
development and
manufacturing
capabilities.

Unrivalled, adaptable,
rapidly-deployed solutions
that reduce the total cost
of ownership of
network builds.

An evolving, iterative,
entrepreneurial
culture

M4 FLEX

COMPACT. FLEXIBLE. BUILT FOR MODERN FTTX NETWORKS.



M4 FLEX

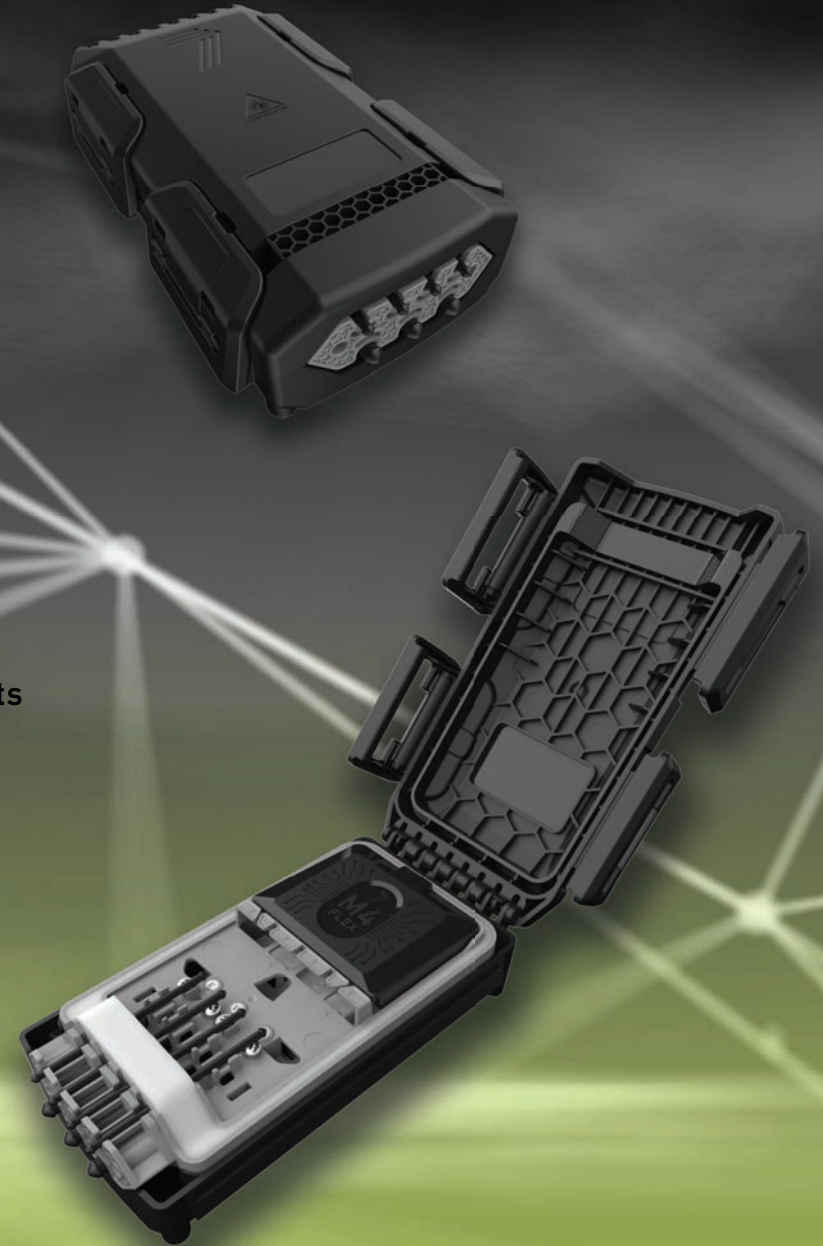
COMPACT. FLEXIBLE. BUILT FOR MODERN FTTX NETWORKS.

The M4 Flex is a compact, high-performance enclosure designed for flexible FTTx deployments across aerial and underground networks. Built to support both round and flat cables and with robust IP68 environmental protection, it delivers reliable performance in space-constrained and demanding installation environments.

Designed for fast deployment, simplified splicing, and long-term durability, the M4 Flex is ideal for access points, mid-span applications, and modern fibre distribution networks.

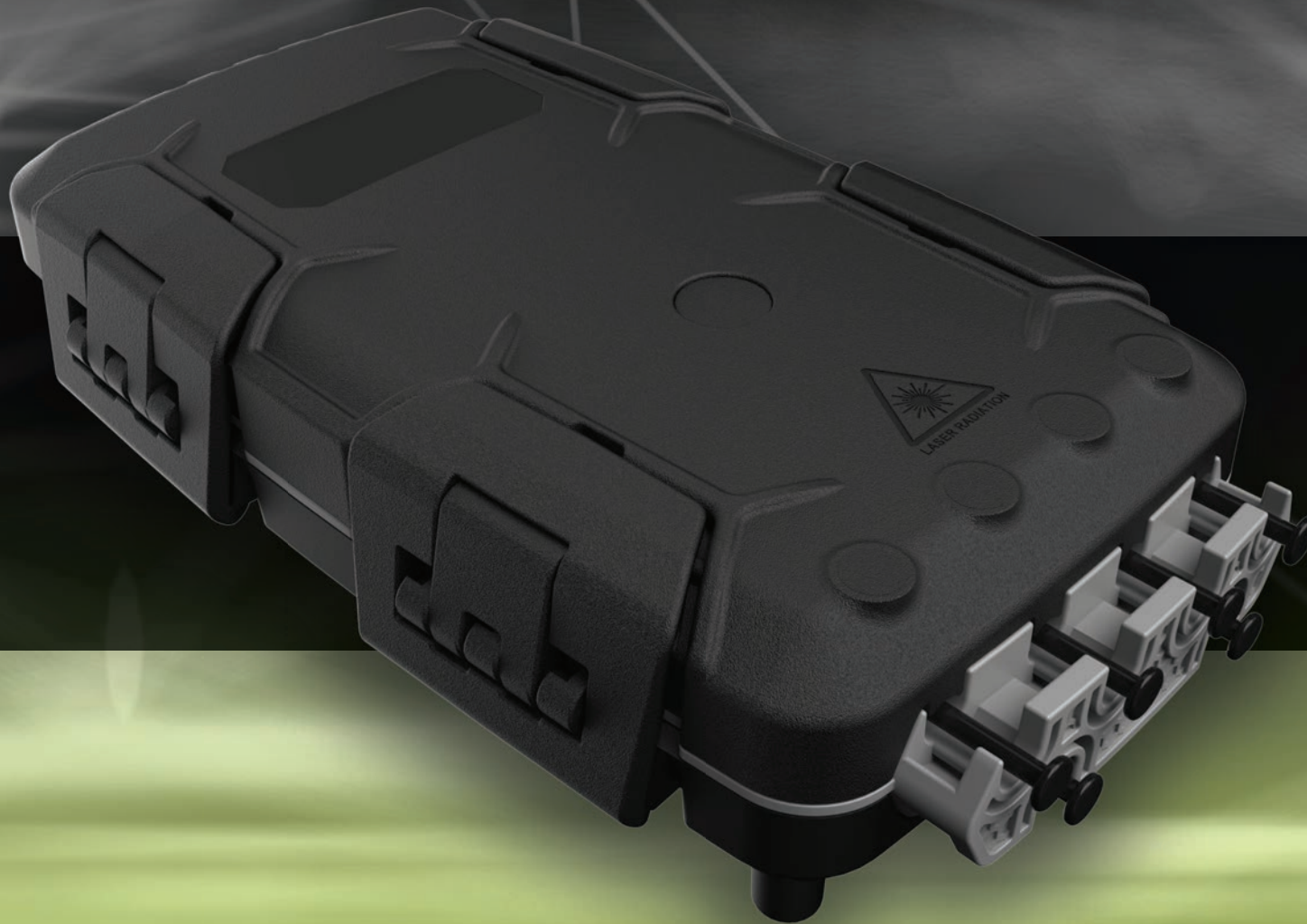
Features

- IP68-rated enclosure suitable for harsh, wet, dusty, and underground environments
- Compact footprint for tight aerial installations and small underground vaults
- Supports both round and flat cables for flexible network design
- Suitable for wall and pole mounting
- Designed around a 10 mm fibre bend radius
- Recommended for G657.A1 and G657.A2 fibers
- Supports pre-connectorised and spliced drop cables
- Integrated adaptor plate supporting 4 × SC simplex or LC duplex adaptors
- Dedicated fibre management tray with controlled bend radius
- Enhanced internal storage for fiber loop routing
- Patch-through functionality supported
- Self-supporting hinged lid for hands-free installation
- Removable inner assembly for simplified splicing and maintenance



M4 MICROLOOP ENCLOSURE

A ROBUST MULTIFUNCTIONAL ENCLOSURE IDEAL FOR FTTX MASS DEPLOYMENT.



M4 MICROLOOP ENCLOSURE

A ROBUST MULTIFUNCTIONAL ENCLOSURE IDEAL FOR FTTX MASS DEPLOYMENT.

As part of our Rapid Deployment System, the M4 Microloop Enclosure is equipped for mid-span access with integrated bare fiber loop storage. It facilitates up to 4 drop cables either pre-connectorized or spliced.

The M4 drop cable entry side has two plate options: An adaptor plate for 4 x SC simplex adaptors (flangeless) or 4 x LC duplex or a bare fiber management plate.

Features

- A continuous gel seal incorporates cable entries and the enclosure seals to an IP68 rating. A continuous gel seal incorporates cable entries and the enclosure seals to an IP68 rating.
- The Enclosure's lid opens upward and contains a self supporting hinge to allow the lid to remain in an open position whilst accessing the inner cable assembly.
- The inner cable assembly can easily be removed for preparation and maintenance work. This is ideal for mounting applications.
- The M4 was designed for a maximum fiber bend radius of 10mm and is recommended for G657.A1 and G657.A2. There's an optional barrel lock for security.
- The splice tray accommodates a single PLC Splitter whether pre-connectorized or bare fiber from 1:2 to 1:8. It contains a splice tray bay for 10 off 2.4 x 455mm heat shrink splice protectors double stacked.
- It is ideal for wall and pole mounting and suitable for placement in manhole chambers or boundary access point.



M8 MICROLOOP ENCLOSURE

IDEAL FOR BOTH AERIAL AND UNDERGROUND NETWORK APPLICATIONS.



M8 MICROLOOP ENCLOSURE

IDEAL FOR BOTH AERIAL AND UNDERGROUND NETWORK APPLICATIONS.

The M8 facilitates up to 8 customer drops from a single node, which reduces implementation costs to reach more homes. IP68 rated.



Features

- 2 x network cable entry ports with strength member & aramid fixation.
- Removable pole mount brackets enables the enclosure to be directly mounted to transmission poles.
- Wall mounting points under the cover for improved security.
- External padlock staples to fit conventional padlocks for maximum security.
- Improved toggle clamps that are tamper resistant.
- 8 x Drop cable exit ports up to 6mm with adapter plate to fit 4 SC simplex or 4 LC duplex adapters.
- Options of 2 x 12F splice trays with PLC splitter bay per tray; or a high-density 1 x 48F splice tray which incorporated 1 x PLC Splitter Bay.
- PLC splitter bay houses a small form module for bare fiber or 900µm tails.

M16 MICROLOOP ENCLOSURE

THE ULTIMATE SOLUTION FOR YOUR RAPID FTTX DEPLOYMENT.



M16 MICROLOOP ENCLOSURE

THE ULTIMATE SOLUTION FOR YOUR RAPID FTTX DEPLOYMENT.

This compact enclosure handles conventional ADSS cables effortlessly and features 16 drop cable exit ports. Perfect for aerial networks, it's engineered to streamline and boost connectivity.



Features

- The M16 is perfect for serving as a break enclosure, providing a reliable and efficient solution for repairing damaged cables.
- This enclosure comes with a versatile adaptor plate, accommodating 8 SC simplex or 8 LC duplex adaptors.
- The M16 features 4 network cable entry ports, with 2 dedicated for connecting houses and the 3rd acting as a spur link to another microloop enclosure. Complete with strength member and aramid yarn fixation, it ensures secure and reliable connections.
- Includes 1x24F splice tray with 1x PLC splitter bay and 1x 48F splice tray which incorporates 2x PLC splitter bays.

M32 SUBSCRIBER NODE

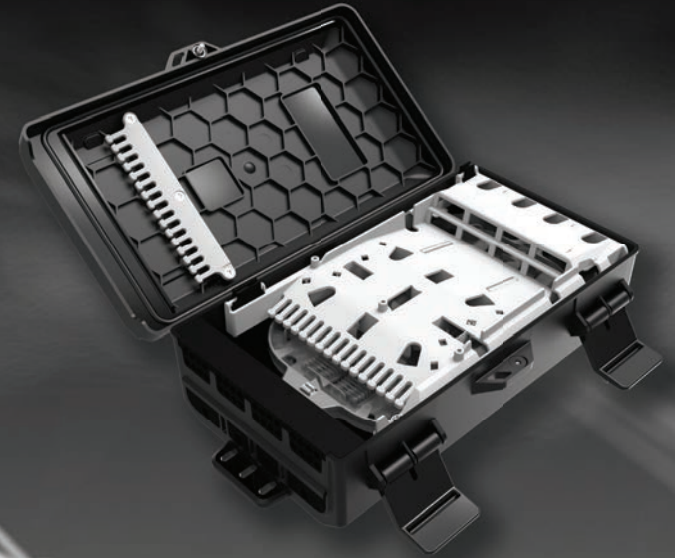
A SINGLE ENCLOSURE IDEAL FOR AERIAL NETWORK APPLICATIONS. RATED IP55.



M32 SUBSCRIBER NODE

A SINGLE ENCLOSURE IDEAL FOR AERIAL NETWORK APPLICATIONS. RATED IP55.

A compact and secure solution for installing pre-terminated drop cables for FTTx applications, offering up to 32 drop cable customer connections, from a single enclosure.

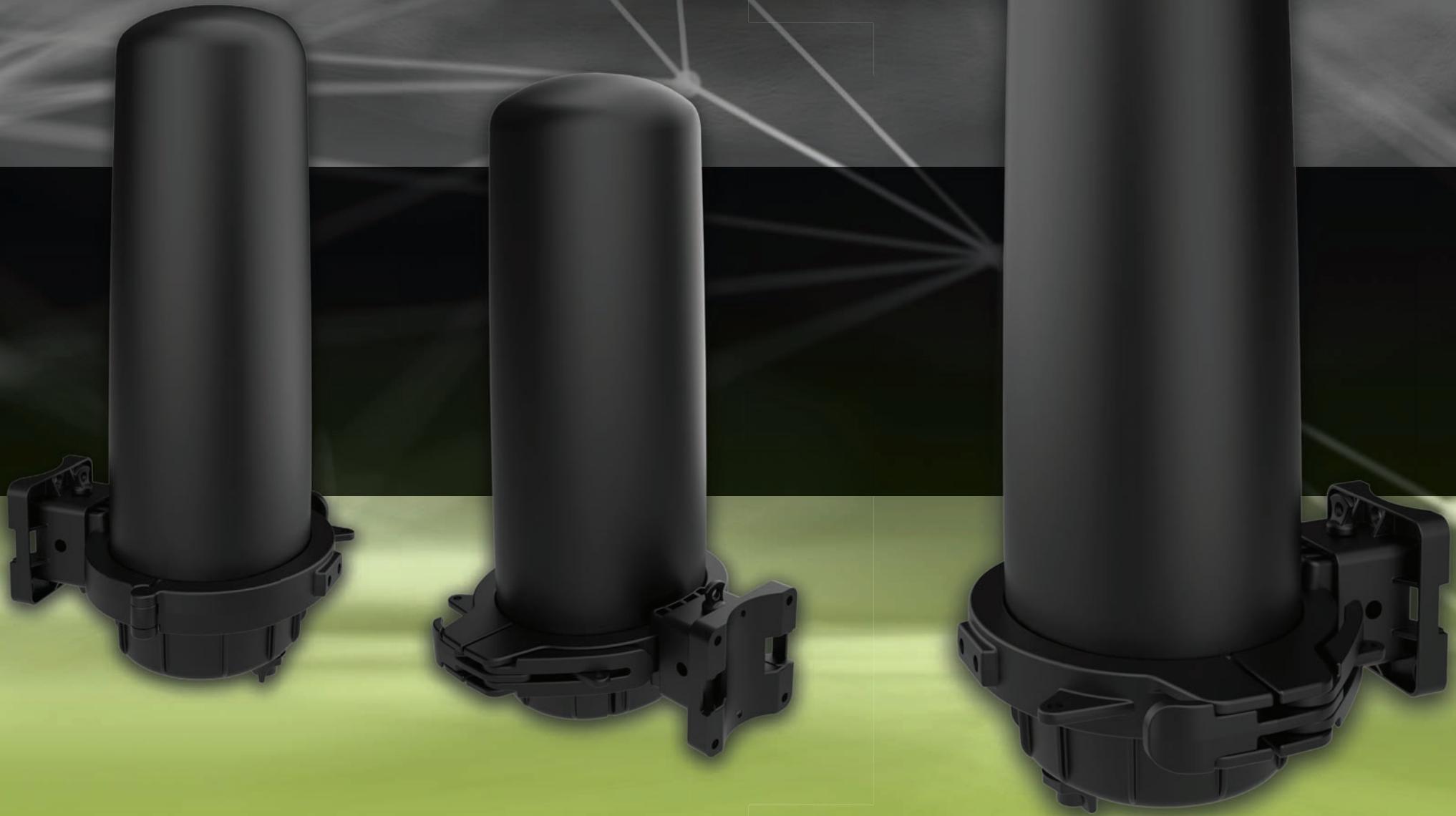


Features

- Accommodates up to 72 splices with heat-shrink splice protector compatibility.
- Hinged fiber management tray supports 1x2, 1x4, 1x16, and 1x32 PLC splitters.
- Flexible cable management with 4 drop cable grommets (8 ports each) for 32 cables (2.5mm-5mm).
- 4 network ports for cables from 5mm-16mm.
- Reliable fixation for drop cables (cable ties) and network cables (hose clamps).
- Separation of splicing and customer drop connections for streamlined organizations.

LOOP DOME JOINT

VERSATILE SPLICE ENCLOSURE THAT IS IDEAL FOR HIGH DENSITY DEPLOYMENT.



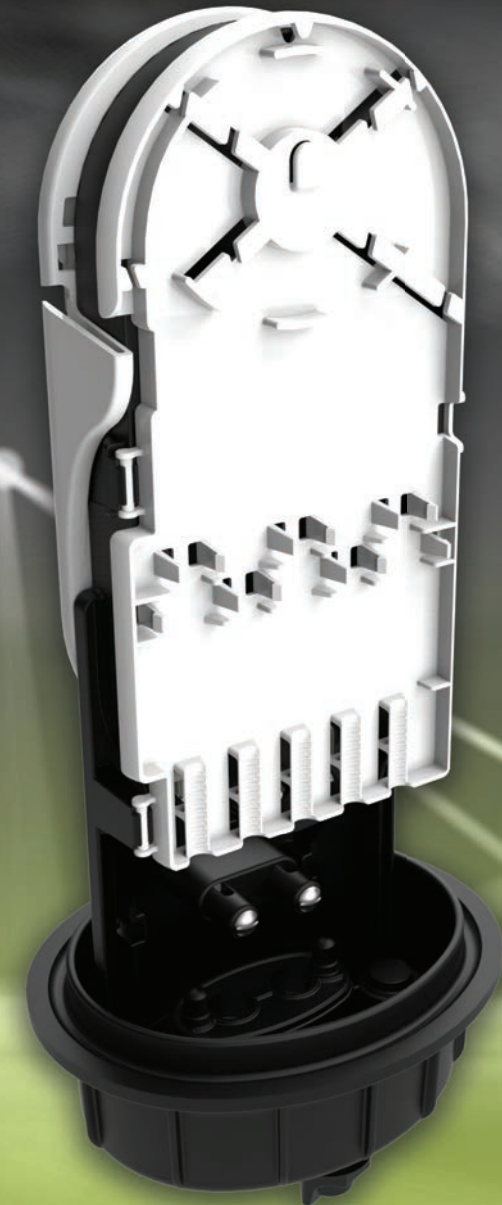
LOOP DOME JOINT

VERSATILE SPLICE ENCLOSURE THAT IS IDEAL FOR HIGH DENSITY DEPLOYMENT.

The FTTx Loop Dome Joint is a versatile splice enclosure deployed in FTTx networks and incorporates mid-span access, loop storage and a patch plate for pre-terminated drop cable. The base comprises 5 round port entries and a single oval port entry. A loop storage basket is positioned between a 12F single element splice tray and a 5 x SC SX (or 5 x LC DX) adapter tray on either side. The splice tray makes provision for 1 PLC Splitter (1:2 to 1:16).

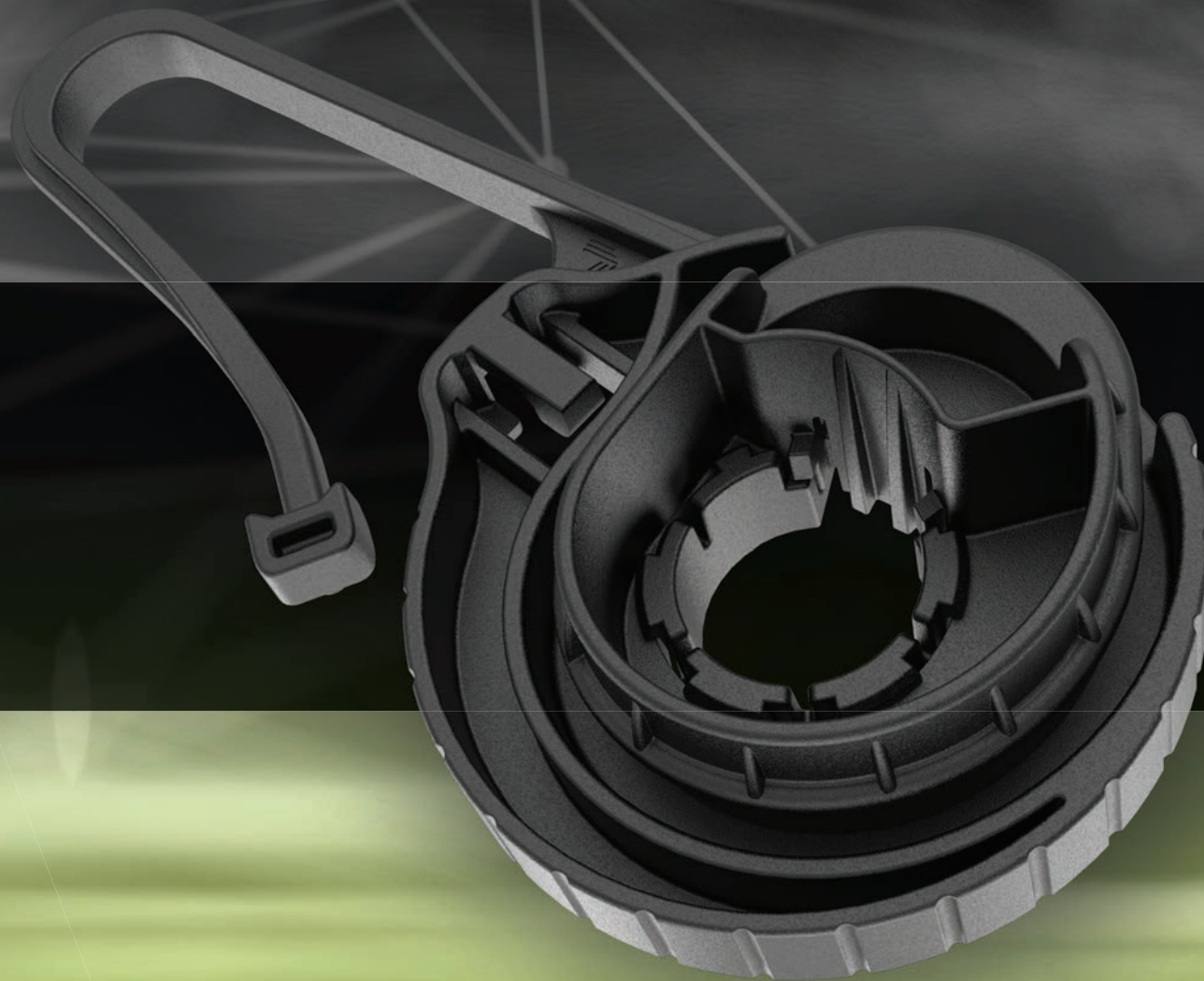
Features

- The Loop Dome Joint is designed to improve aesthetic appeal on aerial networks in suburbia.
- The Joint can be secured with a padlock.
- The main splice & loop assembly is supplied separate from the base and clips onto the base with a single motion. This enables the technician to prepare the mid-span access loop with ease speed.
- The loop basket accommodates cable with up to 12 fiber elements with a storage capacity of 1600mm of 2.0mm fiber elements.
- The splice tray can fit either 24F heat shrink splices (2.4mm) double stacked or 12F mechanical splices including a single PLC Splitter (4x4x40mm) from 1:2 to 1:16 split ratio. Fiber elements are secured to the splice tray using standard cable ties.
- The adapter tray/patch panel can fit off SC SX adapters or 5 LC DX adapters including 5 cable landings. Drop cables are secured using cable ties.
- Five round single mechanical entry ports (3-5mm) and 1 oval mechanical entry port (8-16mm) comprises the base.
- A cable twist block is supplied to provide additional lateral support to the mid-span cables entering through the oval port, effectively limiting any movement of the cables inside the dome.



RAPID-HOLD

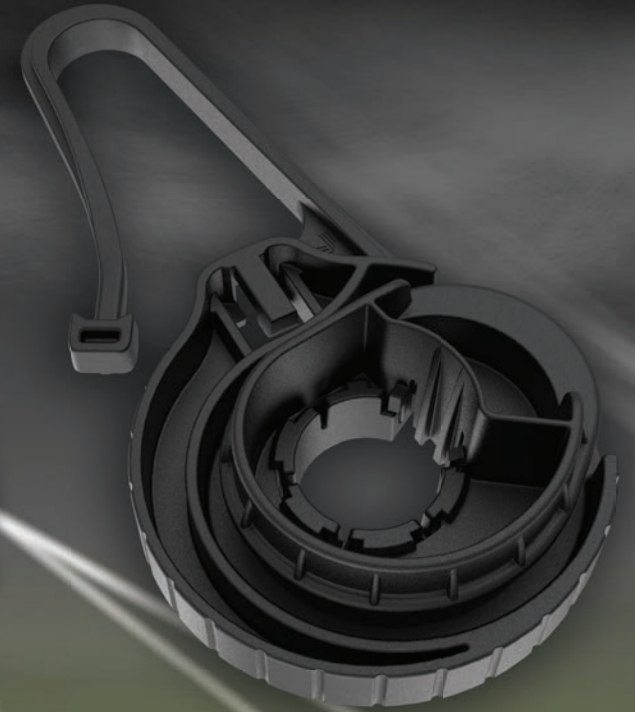
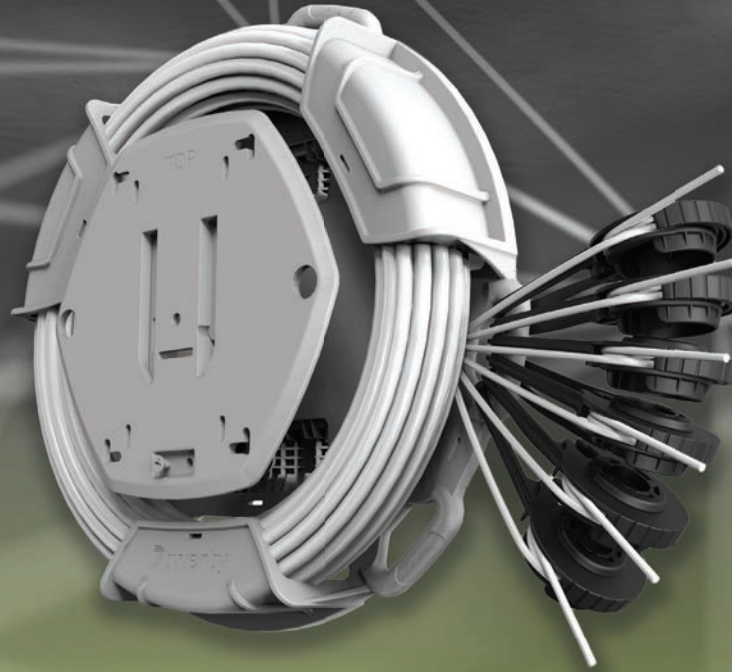
A REVOLUTIONARY DEAD-END CLAMP FOR DROP CABLE.



RAPID-HOLD

A REVOLUTIONARY DEAD-END CLAMP FOR DROP CABLE.

The Rapid-hold is an innovative cam and lock-release system. 7Twenty's unique Rapid-Hold is designed to secure drop cable and eliminate the need for multiple dead end sizes.



Features

- A robust product.
- No additional tethered components.
- Constructed from reinforced and UV stabilized thermoplastic.
- Metal free components.
- Rapid, easy and tool-free installation.

The wedge system evenly distributes cable loads, reducing stress concentrations and maximizing overall cable performance. The ratchet empowers installers to release the Cam and readjust cable sag tension to meet network specifications seamlessly.



RAPID-STOR

MULTI-PURPOSE CABLE SLACK MANAGEMENT SYSTEM.



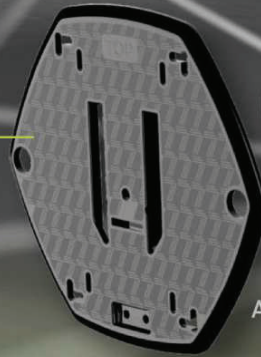
RAPID-STOR

MULTI-PURPOSE CABLE SLACK MANAGEMENT SYSTEM.

As part of our Rapid Deployment System the Rapid-Stor purposefully organizes network poles to reduce clutter and unsightly cable management whilst increasing the rate of deployment in order to reduce total cost of implementation.

Equipment Mounting Plate

Drill holes for pre-located punch holes or use prelocated slots
Detachable equipment mounting plate enables ground service management

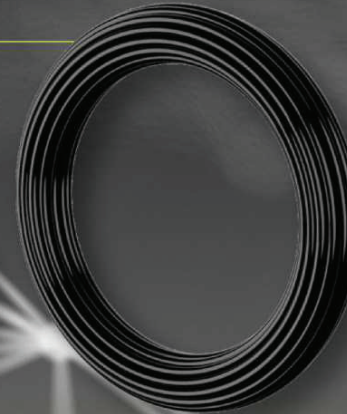


Cable Coils

Combines both access network and customer drop cables in one central hub



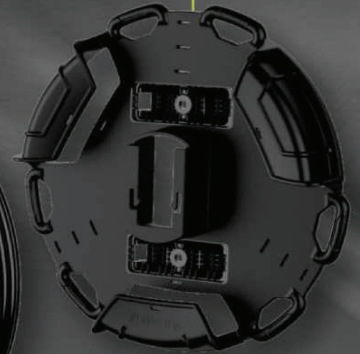
Additional storage of 52 meters of drop cables $\leq 5.5\text{mm } \emptyset$



Storage for min. 16 meters of cable up to 10mm \emptyset behind retaining claws

Rapid-Stor Storage Frame

UV stable material suitable for an outdoor environment



426mm

426mm

The Rapid-Stor functions in conjunction with a monopole suspension bracket to anchor the network distribution cable

Features

- Detachable equipment mounting plate enables ground service management.
- Pre located slots, alternatively drill new holes for bespoke enclosures.
- Storage for min. 16 meters of drop cables up 10 mm \emptyset behind retaining claws.
- Additional storage of 52 meters of drop cables up to $\leq 5.5\text{mm } \emptyset$.
- Combines both access network and customer drop cables in one central hub.
- UV stable material suitable for outdoor environment.
- Integrated steel strap pole mounting system or optional coach screw.
- Optional velcro or ip tie slots to secure cable coil.
- 6 x Drop cable D-ring hardpoints to secure cable dead-ends to a maximum tensile load of 490N per D-ring.



RAPID-STOR XL

HIGH-CAPACITY CABLE SLACK MANAGEMENT SYSTEM.



RAPID-STOR XL

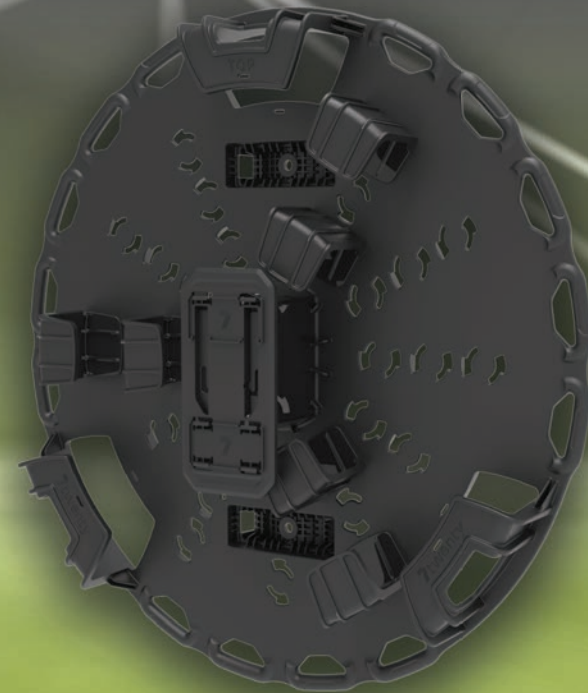
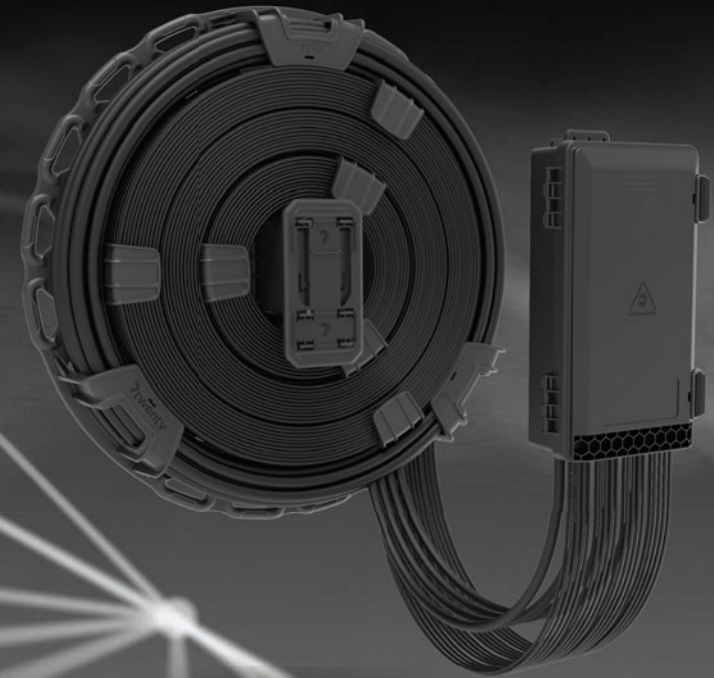
HIGH-CAPACITY CABLE SLACK MANAGEMENT SYSTEM.

The Rapid-Stor XL is a high-capacity cable slack management system designed to streamline network pole installations and support faster, cleaner fibre deployments. Engineered for dense network environments, it centralises access and drop cable storage within a single, organised hub, reducing visual clutter, improving installation efficiency, and lowering total deployment costs.

With scalable storage capacity, secure anchoring points, and flexible mounting options, the Rapid-Stor XL enables reliable, service-friendly cable management built for long-term outdoor performance.

Features

- Purpose-built to reduce pole clutter and improve network organisation.
- Stores up to 20m of access network cable ($\text{Ø} \leq 16\text{mm}$).
- Stores up to 480m of drop cable ($\text{Ø} \leq 4\text{mm}$).
- 14 x Drop Cable D-Rings supporting up to 56 drop cable dead-ends.
- Incremental, movable Rapid Claws for scalable cable management.
- Integrated pole mounting brackets for secure installation.
- Compatible with steel banding or M10 coach screw mounting.
- Detachable equipment mounting options for easier servicing.
- UV-stable, 30% glass-filled polypropylene construction for long-term outdoor performance.



AERIAL SLACK BIN

A POLE MOUNTED ENCLOSURE DESIGNED TO CONCEAL AERIAL CABLE SLACK.



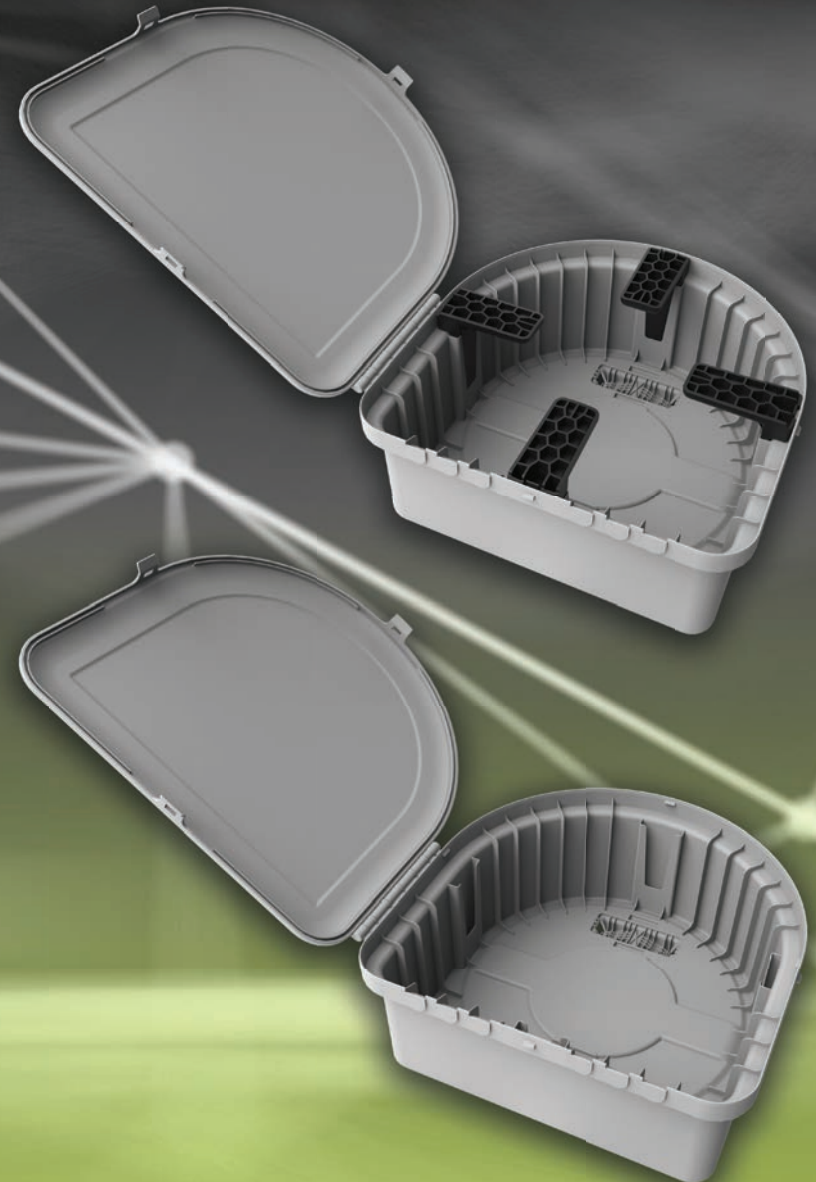
AERIAL SLACK BIN

A POLE MOUNTED ENCLOSURE DESIGNED TO CONCEAL AERIAL CABLE SLACK.

The Aerial Slack bin is a pole mounted enclosure to conceal aerial cable slack. The Slack Bin is designed to also safely secure the cable even once the lid has been opened, making it safer for the technician to work with it at heights.

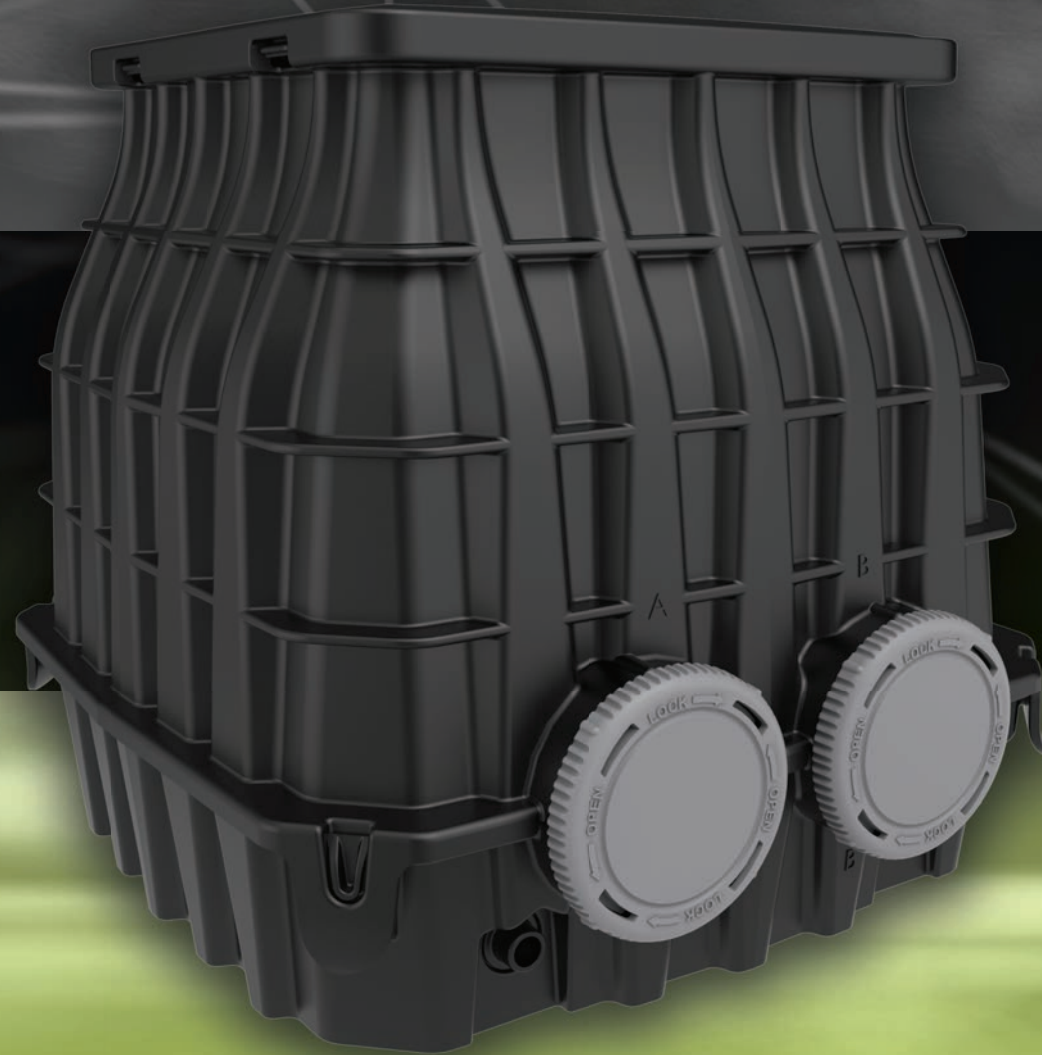
Features

- The Aerial Slack Bin is UV stabilised and supplied in grey or black.
- The lid is hinged and secured with 3 clips. The lid can be opened and closed with a one handed action.
- The base is fitted with two rear mounted pole support brackets to form a good grip on the pole.
- There are 4 removable cable slack securing brackets inside the base. Once the slack coil is ready to be stowed then the brackets can be removed to get easy access. The slack brackets clip into position.
- There are 6 knock out ports at the bottom of the base for incoming and outgoing cable. Split grommets can be cut to the cable diameter and slipped into the knock outs to form a seal.
- The Aerial Slack Bin can hold up to 25m of loomed cable slack for cables up to 10mm in diameter.
- An optional galvanised pole mount bracket is inserted from inside the base of the bin and fastened around the pole from the rear.
- The optional galvanised pole mount bracket is provisioned to mount the FTTx Loop Dome Joint as well. This neatens the pole installation with a back-to-back system and makes the equipment aesthetically pleasing.
- Customers can place their branding on the lid.
- The Slack Bin is supplied with 2 pole mount brackets that are fastened to the pole with steel strapping.



UG 300

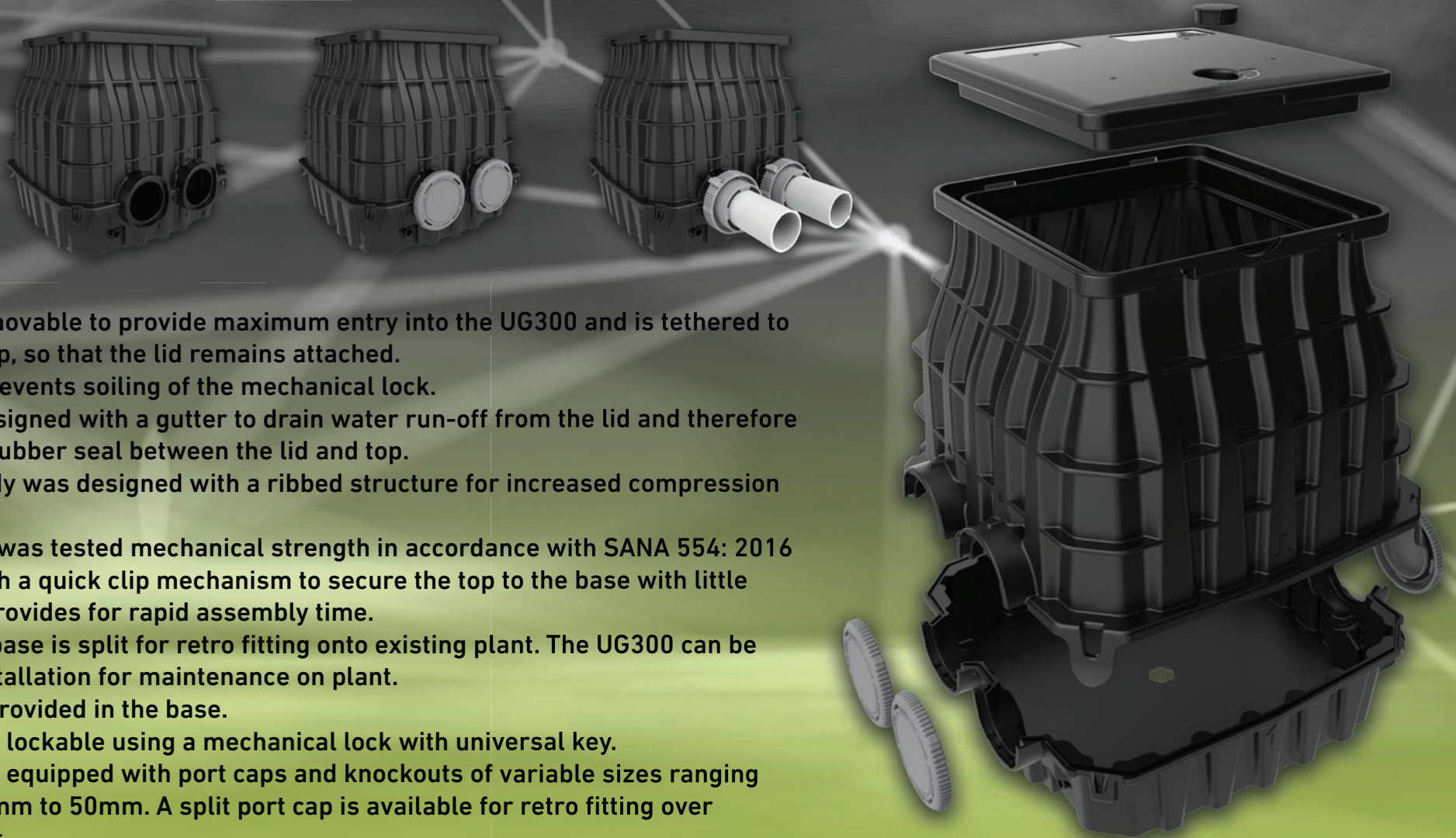
A HANDHOLE DESIGNED TO STORE, TERMINATE, SPLICE OR TRANSFER FIBER OPTIC CABLE.



UG300

A HANDHOLE DESIGNED TO STORE, TERMINATE, SPLICE OR TRANSFER FIBER OPTIC CABLE.

The UG300 is an underground mini handhole that provides easy access to feeder & distribution cables and/or ducts. The UG300 allows for mid-span breakout from distribution cable, or duct, to the customer premises for FUTH/FTTB network deployment. The UG300 configured to house enclosures and/or cable slack.



Features

- The lid is removable to provide maximum entry into the UG300 and is tethered to the UG300 top, so that the lid remains attached.
- A dust cap prevents soiling of the mechanical lock.
- The top is designed with a gutter to drain water run-off from the lid and therefore requires no rubber seal between the lid and top.
- The main body was designed with a ribbed structure for increased compression strength.
- The UG300 was tested mechanical strength in accordance with SANA 554: 2016
- Equipped with a quick clip mechanism to secure the top to the base with little effort. This provides for rapid assembly time.
- The top and base is split for retro fitting onto existing plant. The UG300 can be split post installation for maintenance on plant.
- Drainage is provided in the base.
- The UG300 is lockable using a mechanical lock with universal key.
- The UG300 is equipped with port caps and knockouts of variable sizes ranging between 8.0mm to 50mm. A split port cap is available for retro fitting over existing plant.

NID FIBER BOX

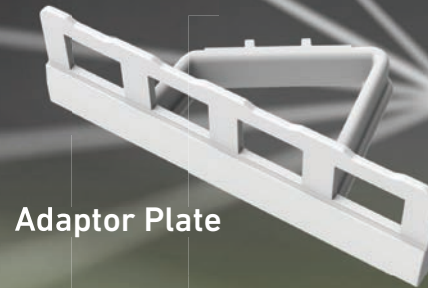
AN IP55 DEMARCATION POINT ENCLOSURE.



NID FIBER BOX

AN IP55 DEMARCATION POINT ENCLOSURE.

The NID (Network Interface Device) Fiber box is an IP55 termination point, installed as outside plant on walls and fences in the FTTx distribution network. The NID Fiber Box accommodates 10F splices with 2.4mm HS splice protectors or 5F mechanical splices. Up to 4 SC SX or LC DX adaptors can be fitted onto the base plate to patch onto a pre-connectorized drop cable. The NID Fiber Box can be used as a demarcation point segregating the customer drop from the network, thus creating flexibility to test and pinpoint faults without having to access the customer's premises.



Adaptor Plate



Features

- The NID Fiber Box can be branded with the customer's logo. The lid has two clip latches and a mechanical lock with universal key for security.
- Ingress protection is rated IP55 and can be used in underground chambers.
- The base plate is fitted with a single element splice tray for up to 10F heat shrink splices or 5F mechanical splices, including a PLC splitter bay to fit a single 4x4x40mm splitter module.
- An additional adaptor plate is available to accommodate up to 4 SC SX or LC DX adaptors.
- The base has 4 anchor points one on each corner which is covered by the lid. The anchor points is also used to attach the optional palisade fence bracket.
- Various cable inserts are available upon request.

NID FIBER BOX WITH PG GLANDS

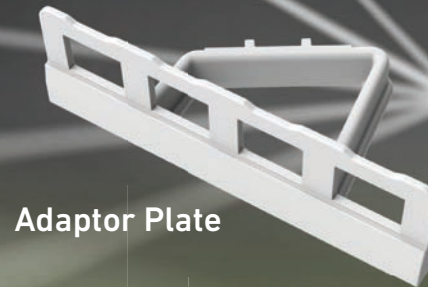
AN IP55 DEMARCATION POINT ENCLOSURE.



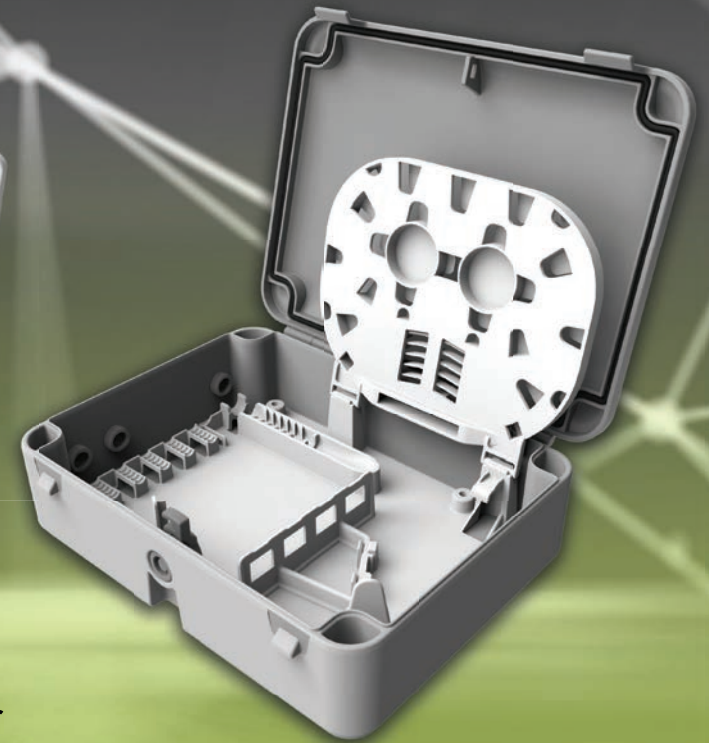
NID FIBER BOX WITH PG GLANDS

AN IP55 DEMARCATION POINT ENCLOSURE.

The NID (Network Interface Device) Fiber box is a termination point, installed as an outside plant on walls and fences in the FTTx network. The NID Fiber Box accommodates 10F splices with 2.4mm HS splice protectors or 5F mechanical splices. The splice tray incorporates a splitter bay. Up to 4 SC SX or LC DX adaptors can be fitted onto the base plate to patch onto a pre-terminated drop cable. The NID Fiber Box can be used as a demarcation point segregating the customer drop from the network, thus creating flexibility to test and pinpoint faults without having to access the customer's premises. The base has 4 knock-outs and PG glands, with O-rings, are supplied to provide a water-tight seal at the cable entries.



Adaptor Plate



Features

- The NID Box lid can be branded with the customer's logo. The lid has two clip latches and a mechanical lock with universal key for security.
- Ingress protection is rated IP55 and can be used in underground chambers.
- The base plate is fitted with a single element splice tray for up to 10F heat shrink splices or 5F mechanical splices, including a PLC splitter bay to fit a single 4x4x40mm splitter module.
- An additional adaptor plate is available to accommodate up to 4 SC SX or LC DX adaptors.
- The base has 4 anchor points one on each corner which is covered by the lid. The anchor points is also used to attach the optional palisade fence bracket.
- The bottom of the base is fitted with 4 knock-outs to fit PG glands, 1 entry and 3 exit glands. Cables and/or ducts can be secured to the base plate using standard cable ties.

NID SLACK STORAGE BOX

A COMPACT AND VERSATILE SOLUTION FOR MANAGING DROP CABLE OR FIBRE MODULE SLACK IN FTTX DEPLOYMENTS.

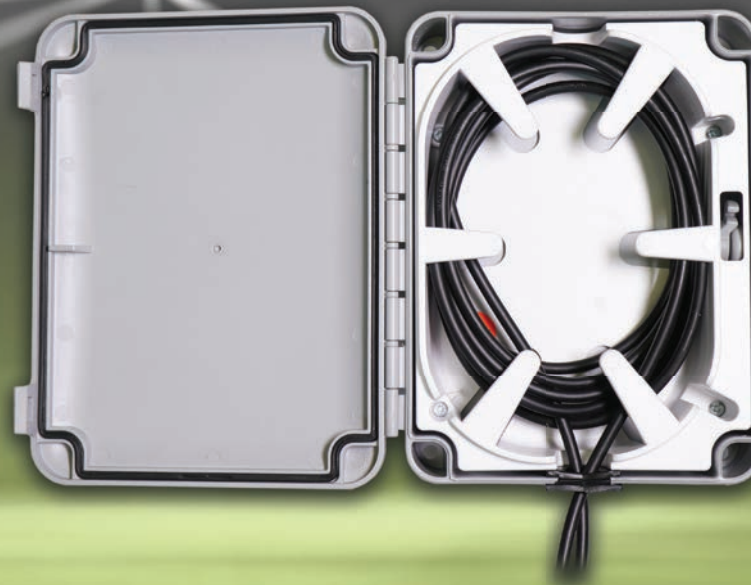


NID SLACK STORAGE BOX

A COMPACT AND VERSATILE SOLUTION FOR MANAGING DROP CABLE OR FIBRE MODULE SLACK IN FTTX DEPLOYMENTS.



The NID Slack Storage Box is a versatile storage box deployed in the FTTx network. The box can be used to store the slack from pre-terminated drop cables or fiber modules at the end of riser cable. The storage box is supplied with split rubber seals, but PG glands can be used instead to achieve an IP55 rating. Made from UV Stabilized material, the box is suitable for outdoor and indoor use.

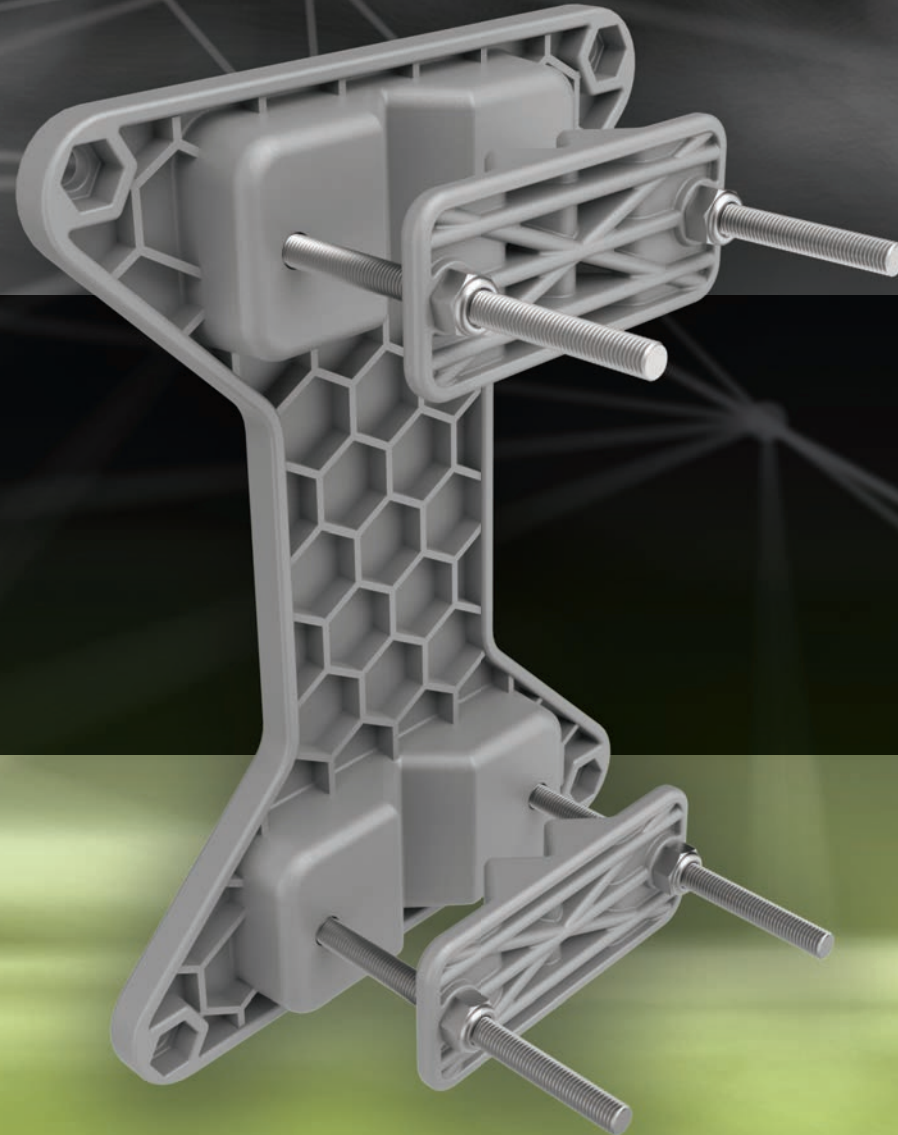


Features

- The NID Slack Storage Box lid can be branded with the customer's logo. The lid has two clip latches and a mechanical lock with universal key for security.
- Ingress protection is rated to IP55 and is suitable for above surface, outdoor installation.
- The base plate is fitted with a slack storage tray which can hold up to 15m of cable 5.0mm in diameter.
- The base has 4 anchor points one on each corner which is covered by the lid. The anchor points are also used to attach the optional palisade fence bracket. Cable entries accommodate cable diameters from 2.0-12.0mm.

FENCE BRACKET

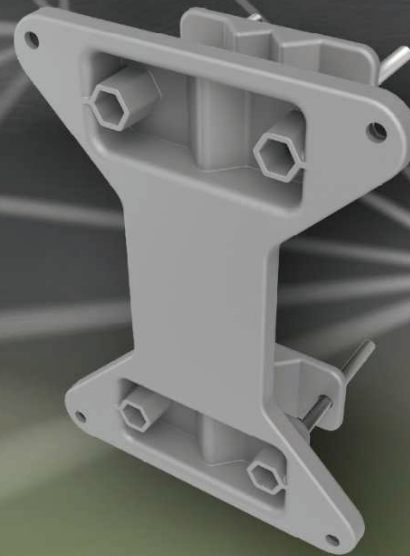
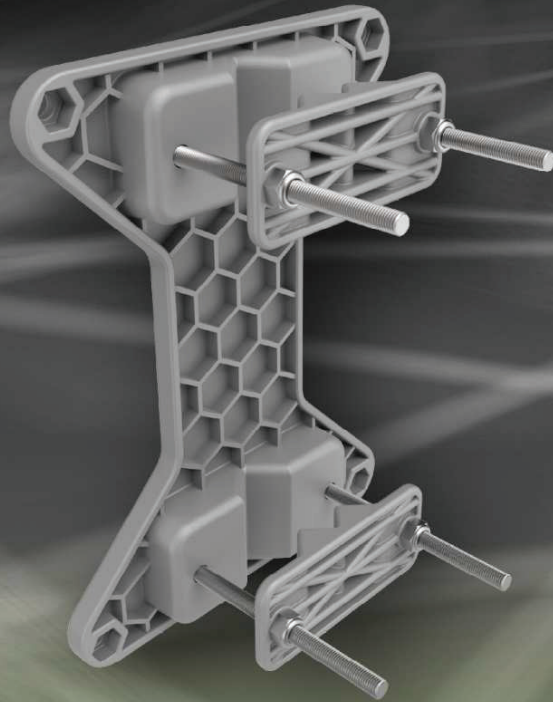
A VERSATILE BRACKET FOR NID FIBER BOXES.



FENCE BRACKET

A VERSATILE BRACKET FOR NID FIBER BOXES.

The NID Fiber Box Fence Bracket is a useful accessory that fits the NID Fiber Box including its variants). The main purpose is to enable a NID Fiber Box to be mounted to just about any type of fencing including palisade fencing, round bar or square tube fencing. The Fence Bracket is supplied with the necessary stainless steel fasteners for convenient assembly.



Features

- The back plate is easily fastened to the NID Fiber Box (and its variants) by using the M6x25mm cap screws and hex nuts.
- The rear support mountings are specifically shaped to fit palisade fencing, round bar fences and can fit other types of fencing as well.
- Hex shaped seating, on the back plate, supports the rear mounting bolts for a slip free fastening of the lock nuts.
- Using ASA material the NID Fiber Box Fence Bracket is robust and UV stabilized.
- The main assembly components are non metallic to eliminate corrosion. Stainless steel fasteners are included to prevent corrosion of the metallic components.

CONNECT POINT

A FLUSH-MOUNTED ENCLOSURE HOUSING AN INTERNAL MOUNTING FRAME AND SPLICE TRAY.

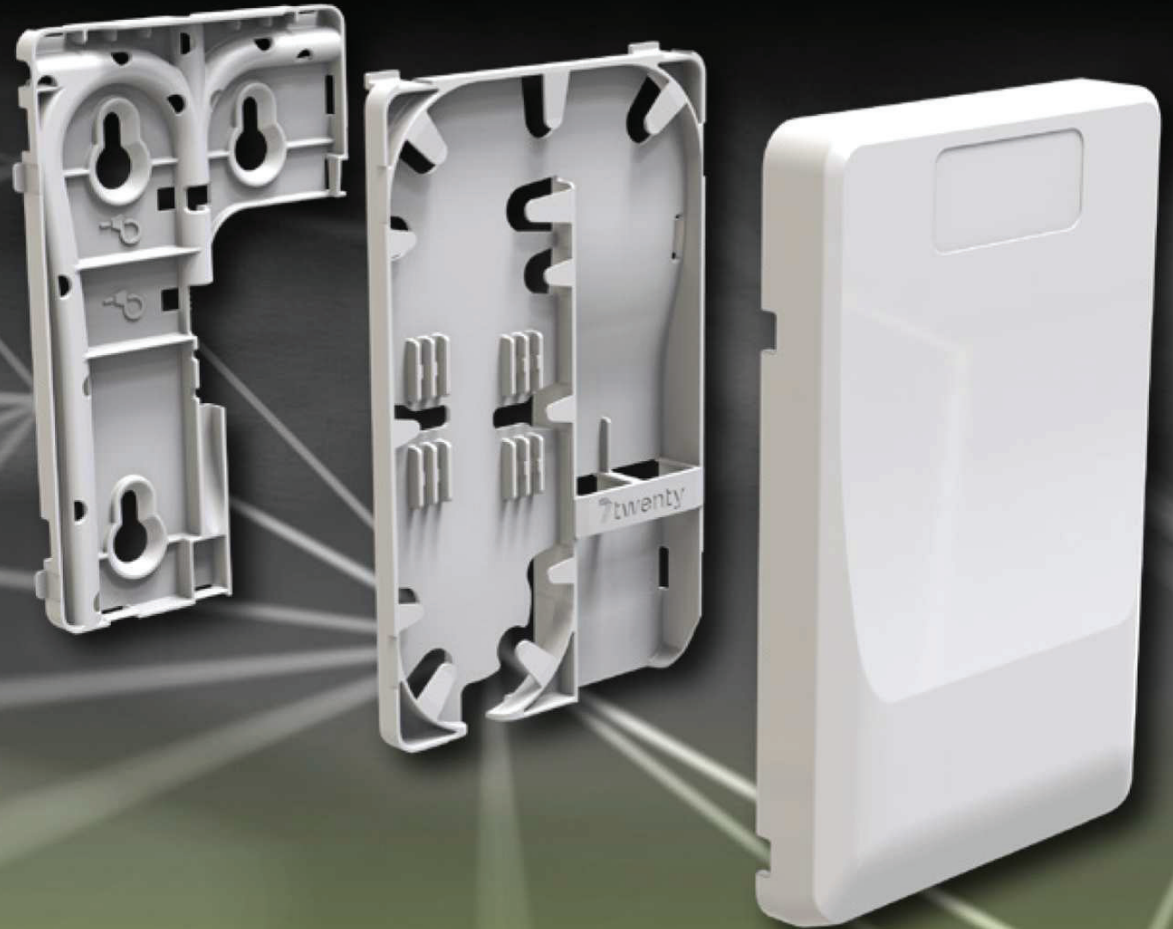
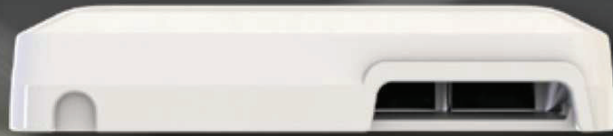


CONNECT POINT

A FLUSH-MOUNTED ENCLOSURE HOUSING AN INTERNAL MOUNTING FRAME AND SPLICE TRAY.

The 7twenty Connect Point is an indoor fiber termination masterpiece combining elegance with rapid installation for FTTH and FTTB.

The fascia has been designed for the discerning customer yet is mindful of the physical placement & application of the product.



Features

- The 7Twenty Connect Point enclosure consists of 3 separate parts: a mounting frame, splice tray & elegant fascia cover.
- The mounting frame is a separate part which is aimed at assisting technicians to easily install, secure & strip cable. There are no visible fasteners.
- It is perfect for FTTH or FTTB installations where the installer needs to provide a final connection point for up to 4 fibres. It has 2 ports that can take LC Duplex or SC Simplex adapters.
- Fiber routing is positively managed to a 20mm bend radius to accommodate all bend incentive fibers found at this point in the network.
- The splice tray allows for intelligent fibre routing, enabling the bare fibre to transition effortlessly onto the storage gateway.
- Our patented fibre-retaining tabs keep unruly fiber in their tracks.
- Custom labelling or branding can be added to the fascia providing brand awareness for ISP's & FNO's.
- The fascia lip, situated at the patch cord exit, has been designed to assist with anchoring the fiber connector, which in turn reduces risk of accidental damage.
- It's ideal for the discerning home or business owner since the overall depth of the Connect Point reduces the risk of damage from accidental bumping.

CONNECT TERMINAL

A 3 IN 1 INDOOR TERMINATION MASTERPIECE.



CONNECT TERMINAL

A 3 IN 1 INDOOR TERMINATION MASTERPIECE.



The Connect Terminal is an indoor, customer wall outlet that is designed to fit any 4x4 surface wall box. It allows for splicing of 2 fibers and can fit 1 x SC simplex (LC duplex) adaptor. In addition, the Connect Terminal houses two ports for either 2 x coaxial cables or 2 x LAN cables or a combination of both.

Features

- The Connect Terminal is made from fire retardend white ABS.
- The removable fascia is secured in 4 locations with clips that can be released with a standard flat screwdriver . There are no visible fasteners.
- The outlet fits securely to any 4x4 surface wall box.
- Two break out areas allow the user to use the Connect Terminal as an outlet for fiber,as well as coaxial and/or ethernet cables.
- The low profile against the wall and the angle of cable exit allows for the Connect Terminal to sit easily behind furniture and pose no obstacle whilst cleaning.
- The clean aesthetics of the Connect Terminal will suit any modern home.
- Customers can place their branding on the fascia.



INNOVATION IN PROGRESS

NEW, INNOVATIVE PRODUCTS ON THE WAY AS WE CONTINUE TO PUSH THE BOUNDARIES OF SMARTER CONNECTIVITY.

M2 Repair Joint

Compact Inline Drop Repair Closure

The M2 Repair Joint, currently in development, is a compact inline closure designed for fast, reliable drop cable repair and network restoration. Engineered for field versatility, the M2 supports multiple cable types and installation methods, making it an ideal solution for rapid repair of aerial and distribution drop connections.

- Supports flat drop, round drop, and flat-figure drop cables commonly used in U.S. fiber networks.
- Ideal for aerial break repairs and emergency drop restoration.
- Suitable for pole-mounted, overhead cable, or surface-mounted deployments.
- Compact inline closure for quick splicing and minimal disruption.
- Flexible cable entry system accommodates multiple drop cable configurations.

Fast repairs. Flexible deployment. Reliable drop restoration.

Specifications subject to change during final product development.

Underground Vaults

The new 7Twenty Underground Vault range, currently in development, is engineered to provide durable underground access for fiber networks while reducing installation and logistics costs.

- Transport-optimised design allows more vaults per truck, lowering logistics costs.
- Single-piece construction – no on-site assembly required.
- Material options: plastic for lower load tiers, composite for higher load ratings.
- Seamlessly integrates with the full 7Twenty enclosure range.

A complete underground fiber access solution — coming soon from 7Twenty.

Specifications subject to change during final product development.





Lets Connect

South Africa

+27 (11) 708 4755
sales@7twenty.tech

USA

+1 (617) 229 7475
info@pimms.group



REG: 2019/239495107 | VAT: 4810154460
+27 11 708 4755 sales@7twenty.tech

STANTON Global (Pty) Ltd, 1050 Liner Ave, C/O
Zeiss Road, Laser Park, Honeydew, Johannesburg

7twenty.tech



PRODUCTS THAT CONNECT THE WORLD

© 2026 7twenty. All rights reserved.

This catalogue and its contents are protected by copyright. No part of this publication may be reproduced, stored in a retrieval system, or transmitted in any form or by any means without the prior written permission of 7twenty.

[7twenty.tech](https://www.7twenty.tech)

